

Air Quality Trend Data and Existing Measures Used for Numeric Credit in the MAG 2017 Eight-Hour Ozone Moderate Area Plan

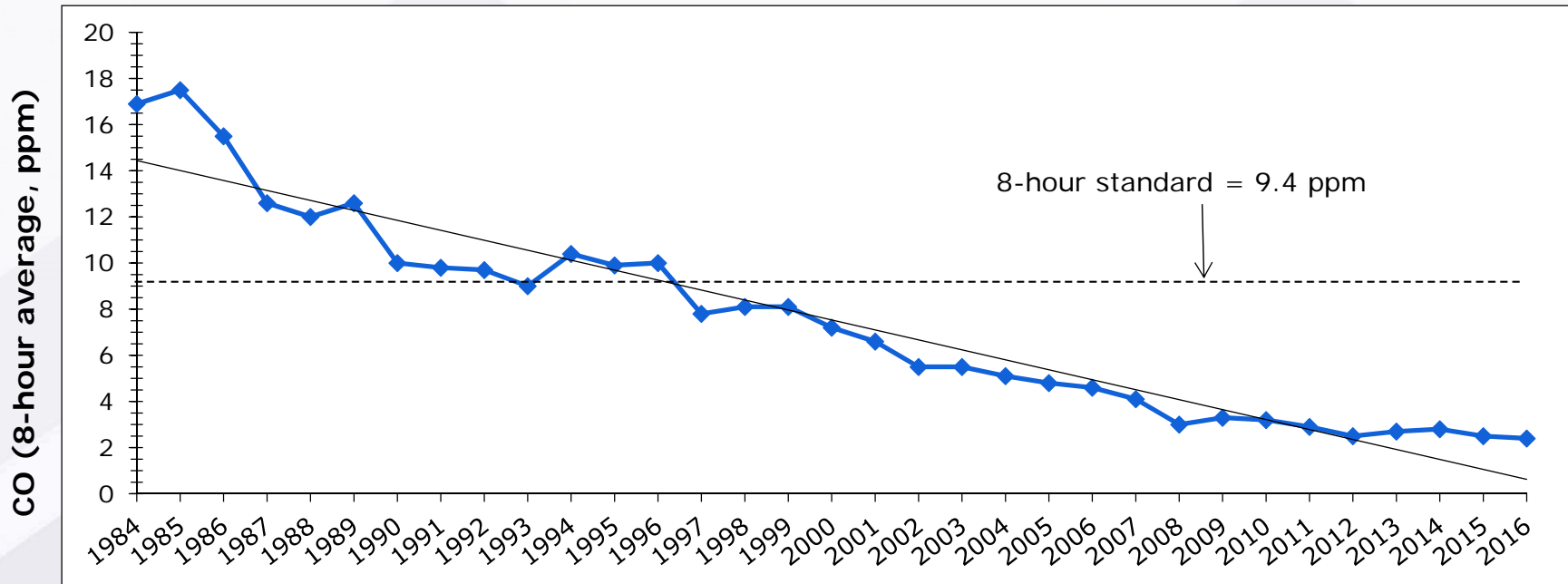


Arizona Department of Agriculture Workshop
Review of Air Quality and Cleaner-Burning Gasoline Requirements
May 18, 2017



Carbon Monoxide Monitoring Data

2nd Highest Eight-Hour Carbon Monoxide Concentrations in the Maricopa County Maintenance Area

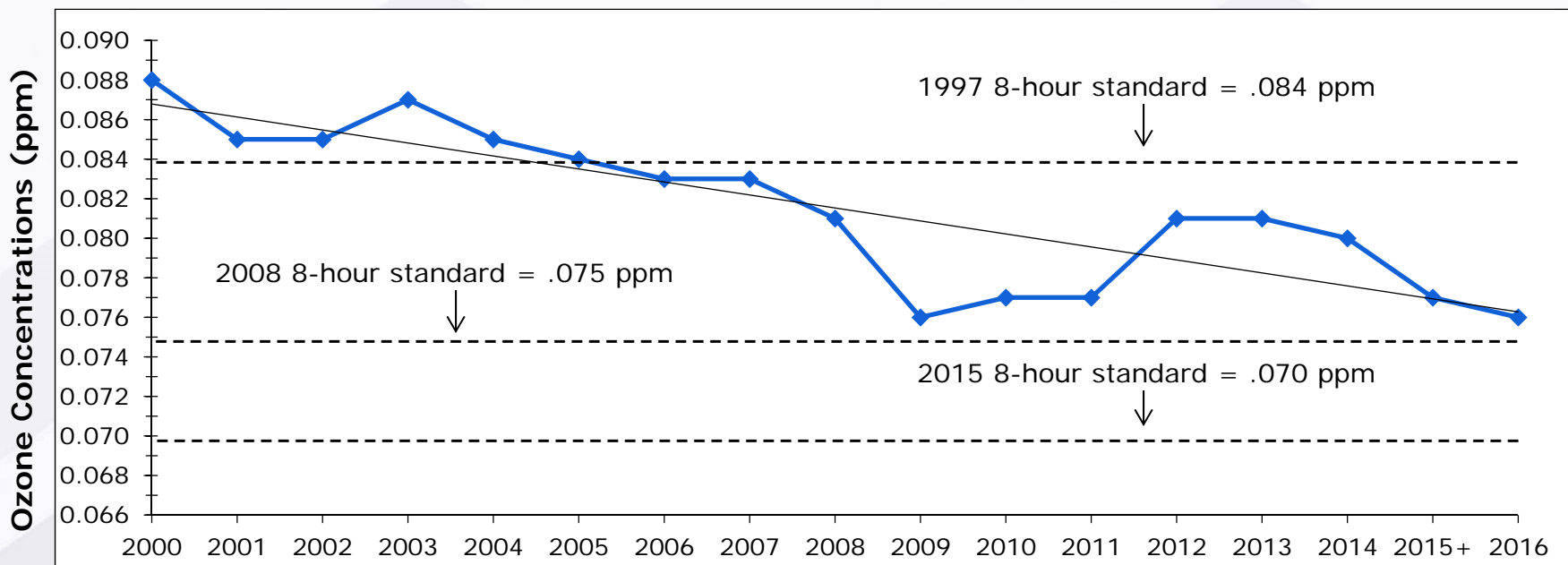


Notes:

- The 2016 value is based on data through October 31, 2016.
- The eight-hour carbon monoxide standard allows no more than one exceedance of the 9 ppm standard at the same monitor per year.
- Due to mathematical rounding, values greater than or equal to 9.5 ppm are necessary to exceed the standard.
- Source: Environmental Protection Agency Air Quality System.

Eight-Hour Ozone Monitoring Data

Highest 3-Year Average of the 4th Highest 8-Hour Ozone Concentration in the Maricopa Nonattainment Area

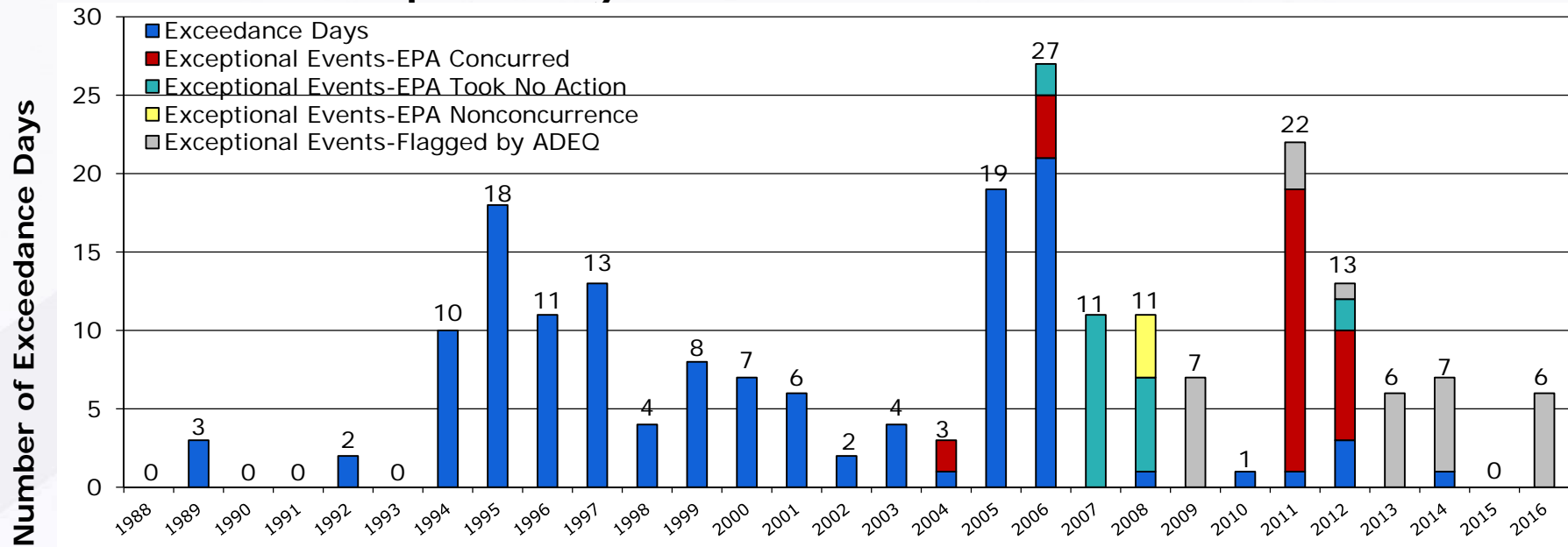


+ Exceedances from the June 20, 2015 exceptional event have been removed. EPA concurrence of the exceptional event is pending.
Note: Due to mathematical rounding, values greater than or equal to 0.085 ppm are necessary to exceed the 0.080 ppm standard.

Sources: 2000-2008: MAG Eight-Hour Ozone Redesignation Request and Maintenance Plan for the Maricopa Nonattainment Area, February 2009;
2009-2016: Environmental Protection Agency Air Quality System.

PM-10 Monitoring Data

Number of 24-Hour PM-10 Exceedance Days in Maricopa County and the PM-10 Nonattainment Area



Notes:

- The 2016 value is based on preliminary data.
- To attain the 24-hour PM-10 standard, there can be no more than three exceedances of 154 micrograms per cubic meter over a three year period per monitor.
- For the past five years (2012-2016), it appears the region has been in attainment of the 24-hour PM-10 standard, pending approval of the exceptional events.
- The Arizona Department of Environmental Quality began flagging exceptional events in 2004.
- On July 19, 2007, the exceedance at the Buckeye monitor was not associated with the exceptional event that also occurred on that day.
- Sources: 1988-1997: Revised MAG 1999 Serious Area Particulate Plan for PM-10 for the Maricopa County Nonattainment Area, February 2000; 1998-2015: Environmental Protection Agency Air Quality System; 2016: Arizona Department of Environmental Quality, Maricopa County, Pinal County.

ENVIRONMENTAL PROGRAMS



MAG 2017 Eight-Hour Ozone Moderate Area Plan Existing Measures Used for Numeric Credit in the Attainment Demonstration

- **Summer Fuel Reformulation: California Phase 2 and Federal Phase II Reformulated Gasoline with 7 psi from May 1 through September 30**
- **Phased-In Emission Test Cutpoints**
- **One-Time Waiver from Vehicle Emissions Test**
- **Tougher Enforcement of Vehicle Registration and Emissions Test Compliance**
- **Expansion of Area A Boundaries**
- **Gross Polluter Option for I/M Program Waivers**

ENVIRONMENTAL
PROGRAMS



MAG 2017 Eight-Hour Ozone Moderate Area Plan Existing Measures Used for Numeric Credit in the Attainment Demonstration

- Coordinated Traffic Signal Systems
- Develop Intelligent Transportation Systems
- Federal Tier 2 and Tier 3 Motor Vehicle Emissions and Fuel Standards
- Federal Phase 1 and 2 Light-Duty and Phase 1 Heavy-Duty Greenhouse Gas Rules
- Federal Nonroad Equipment Standards
- Federal Heavy Duty Diesel Vehicle Emissions Standards
- Federal Portable Fuel Container Rules



For more information contact:

**Lindy Bauer
(602) 254-6300
lbauer@azmag.gov**